



PROCUREMENT OPPORTUNITIES IN TRANSPORT AND LOGISTICS ON THE EACOP PROJECT

China Petroleum Pipeline Engineering Co.Ltd

CONTRACTOR INTRODUCTION

Onshore Pipeline

Offshore Pipeline

Oil & Gas
Storage

Oil & Gas Field
Facilities



As Of 2021

100,000 km onshore pipeline projects

200 km offshore pipeline projects

30 million m³ oil and gas storage projects

100 sets of oil & gas field surface facilities

LNG Processing &
Receiving Terminals

Mini Refinery

Operation
Maintenance

Tele Communication
& Power

BRIEF SCOPE OF WORK

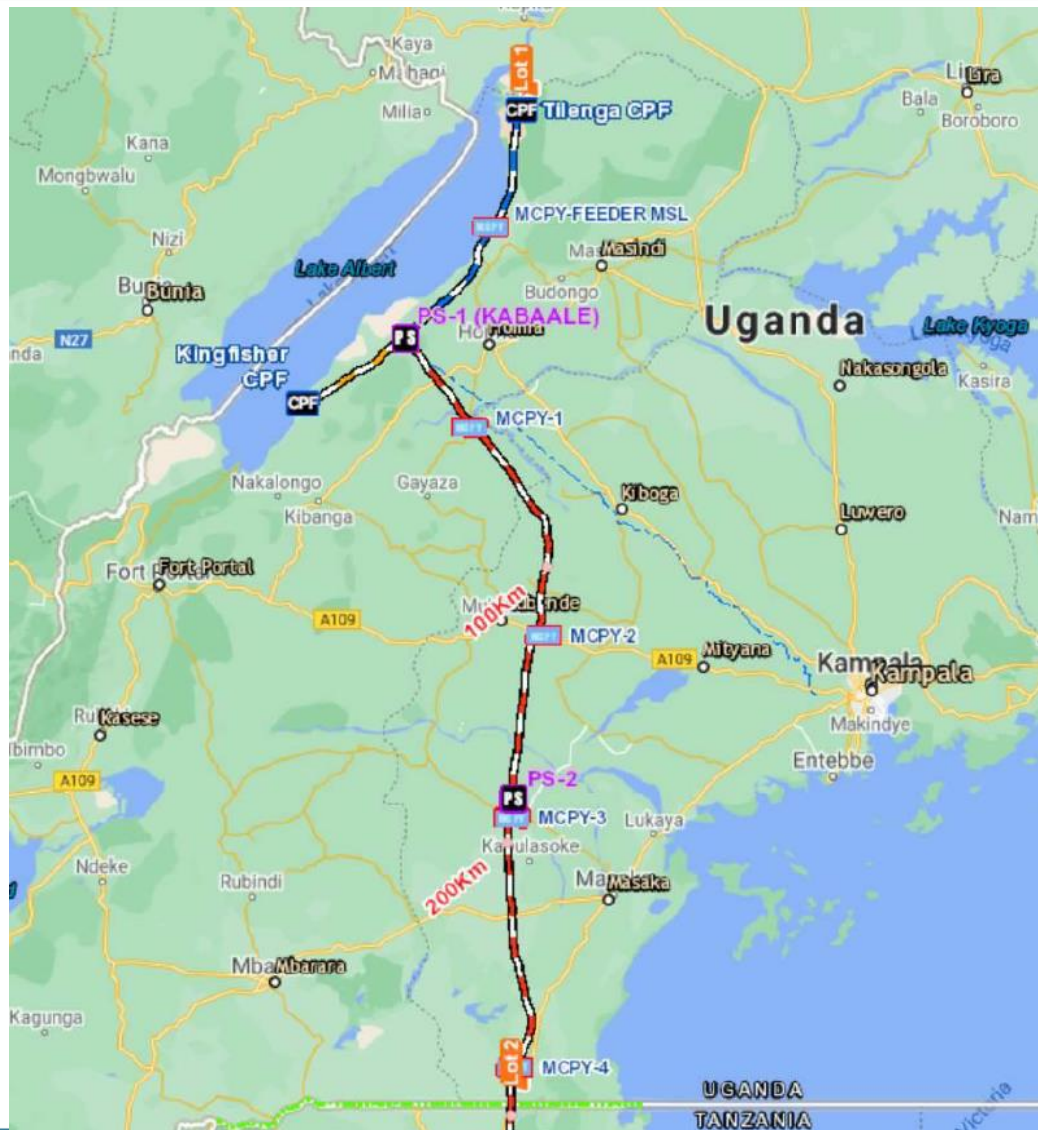
Distance: Tilenga to the border (UG & TZ)

Length: 390km in UG

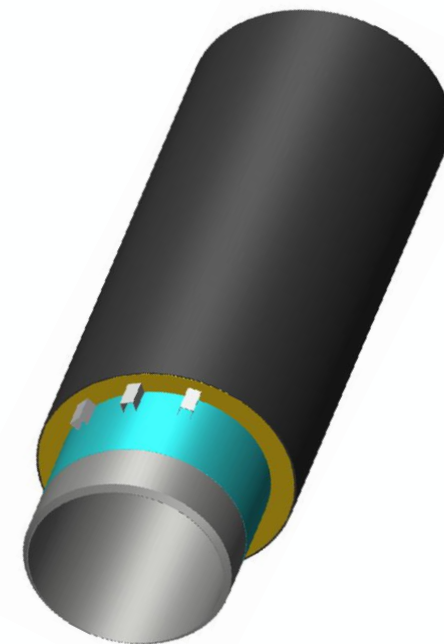
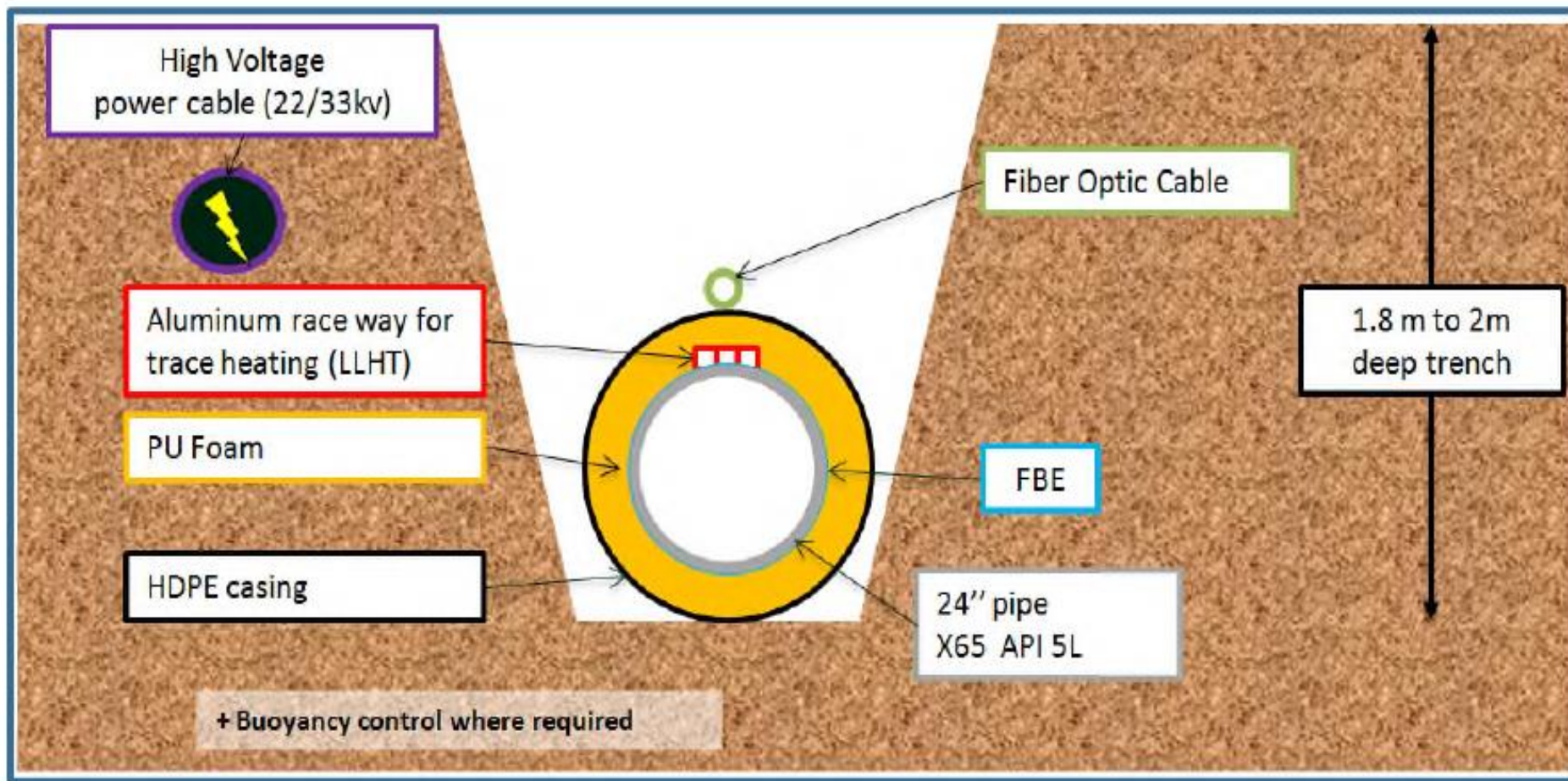
Diameter: 24"

Facilities: 2 Pump Stations, 4 Main Camps, and Pipe Yards, mainline block Valves, and electric heat tracing stations

Duration: 24 months construction +3 months of commissioning support with a warranty period of 24 months



BRIEF SCOPE OF WORK



BRIEF SCOPE OF WORK

District	Package	Start	End	Camp
HOIMA & KIKUUBE	Feederline & LOT1	TKP0	KP10	T-MCPY
				T-PY
KYANKWANZI	LOT1	KP10	KP50	MCPY1
KAKUMIRO	LOT1	KP50	KP100	
MUBENDE	LOT1	KP100	KP120	
GOMBA	LOT1	KP120	KP155	MCPY2 (epC Camp)
SEMBABULE	LOT1	KP155	KP200	MCPY3
LWENGO	LOT1	KP200	KP230	
KYOTERA&RAKA	LOT1	KP230	KP296	MCPY4 (Marshalling Yard)

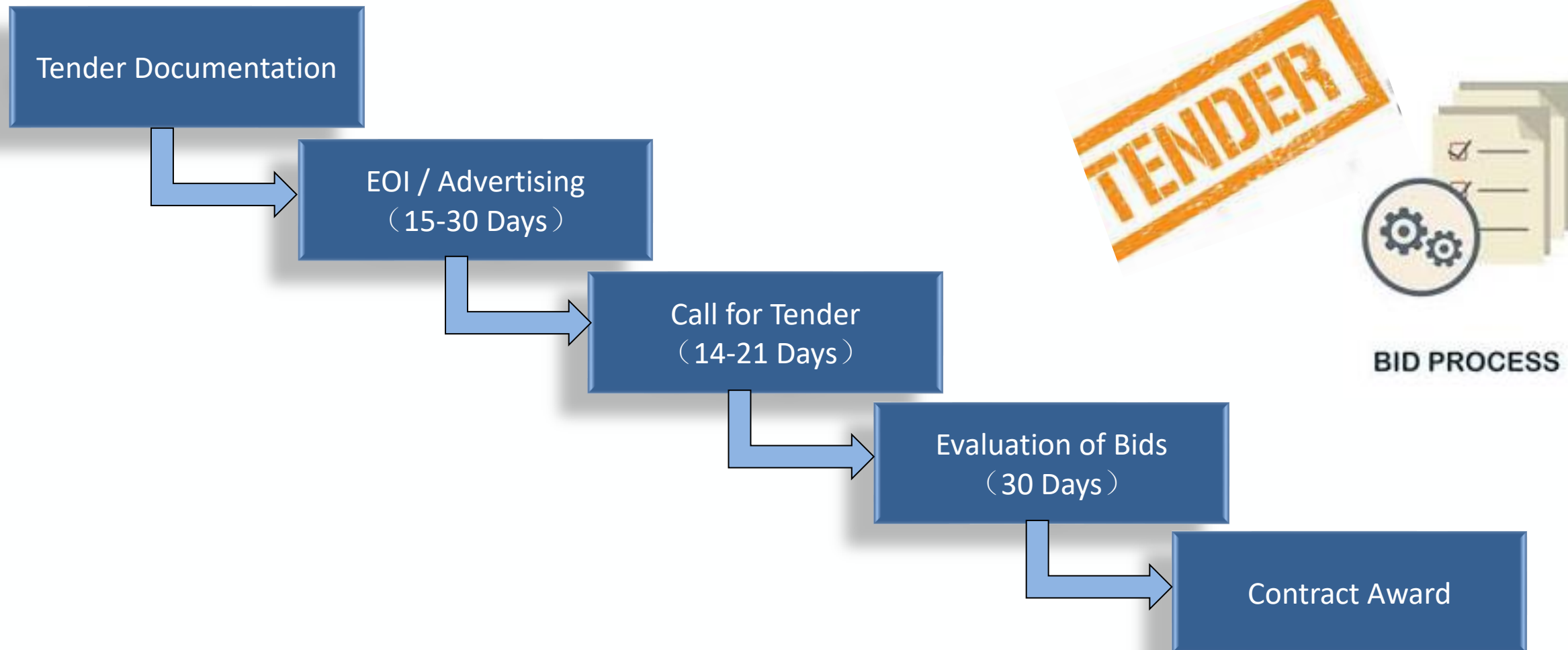
TKP: Temporary Kilometer Post

T-MCPY: Temporary Main Camp and Pipe Yard

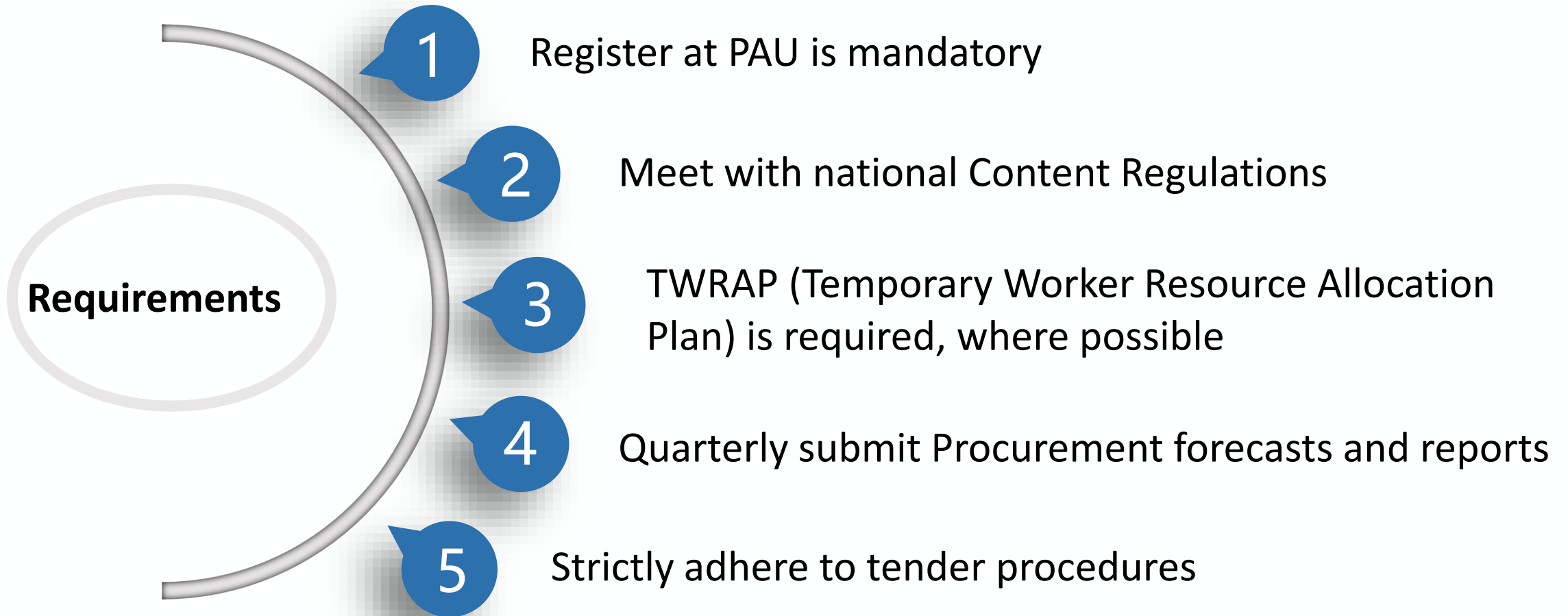
KP: Kilometer Post (1KM)

T-PY: Temporary Pipe Yard

CALL FOR TENDER PROCESS



PERFORMANCE STANDARDS AND REQUIREMENTS



Part 1. Clearing, Forwarding and Transportation

- ★Clearing and Forwarding of the imported Air cargos
- ★Clearing and Forwarding of the imported Sea shipment for Containers and Bulk Cargos
- ★Transportation of the imported cargos from Mombasa port/Dar Es Salaam port or Entebbe airport to CPP marshalling yard
- ★Uganda Inland transportation of the cargos from Mashalling yard to working site

Part 2. Pipeline Transportation

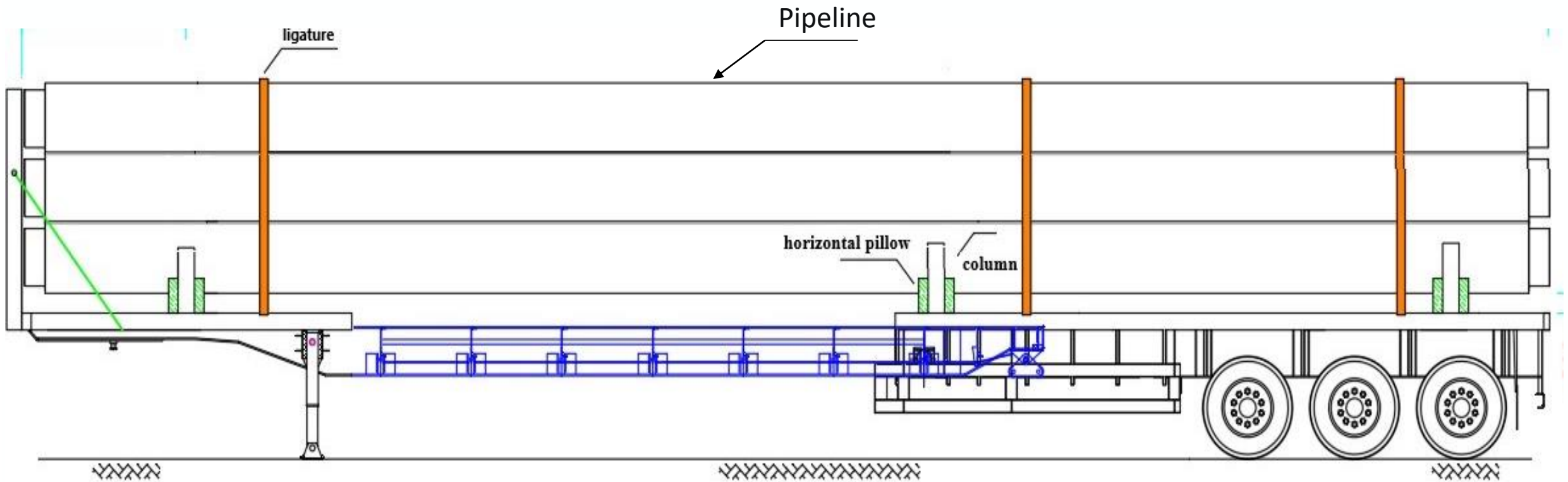
- ★CPP is responsible for receiving the pipelines in the Mashalling yard.
- ★Transport the pipeline from Mashalling yard to other Pipe yard or working site.
- ★Transport the pipeline from Pipe yard to working site

Regarding to Part 2 Pipeline Transportation , CPP have released the EOI on the newspaper dated on February 2,2023, and plan to start the tendering at second quarter of 2023.

Requirement for transport Vehicles

- ★Select transport vehicles that meet the actual situation of the project and road regulations requirements
- ★Vehicles that meet the emission standards for environmental protection and air quality policy requirements
- ★Truck that meets the emission standards for environmental protection and air quality policy requirements in Tanzania or Uganda

PIPELINE TRANSPORT VEHICLES



PIPELINE TRANSPORT VEHICLES



TRANSPORT & LOGISTICS GOODS AND SERVICES TO BE PROCURED & STATUS

Part 3. Local Service for Supporting Materials Handling and Storage

No.	Service	Description	Quantity	On duty time
1	Manpower Arrangement	Custom Clearing officer	2	April,2023
2		Procurement officer	4	April,2023
3		Material Management Officer	12	June,2023
4		Procurement Coordinator	2	August,2023

TO BE CONTINUED

TRANSPORT & LOGISTICS GOODS AND SERVICES TO BE PROCURED & STATUS

Part 3. Local Service for Supporting Materials Handling and Storage

No.	Service	Description	Quantity	On duty time
5	Vehicles Rental	Pickup	4	August,2023
6		Flat-bed	1	August,2023
7		Low-bed	1	August,2023
8	Equipment Rental	Crane 25Ton	2	August,2023
9		Crane 80Ton	1	August,2023
10		Crane 200Ton	1	August,2023
11		Forklift 5Ton	2	August,2023

China Petroleum Pipeline Engineering Co., Ltd.

- **Email:** cppnclc@outlook.com
- **Address:** Plot 19, Luthuli Drive, Bugolobi, Kampala
- **Whatsapp:** +255 756 914 799 (Message Only)
- **Phone No:** +256 780 532 488 - Zhang Haitao (UG)
- **Website:** <http://cpp.cnpc.com.cn/>



ASANTE
WEBALE
THANK YOU
MERCI
謝謝